

Clinical Utility of Pharmacy-Based Adherence Measurement in Predicting Virologic Outcomes in an Adult HIV-Infected Cohort in Jos, North Central Nigeria

Journal of the International Association of Providers of AIDS Care
2016, Vol. 15(1) 77-83
© The Author(s) 2014
Reprints and permission:
sagepub.com/journalsPermissions.nav
DOI: 10.1177/2325957414539197
jiapac.sagepub.com



Isaac Okoh Abah, BPharm, MSc¹, Victor Bazim Ojeh, BPharm¹,
Jonah Musa, MBBS, MSCI², Placid Ugoagwu, BSc¹,
Patricia Aladi Agaba, MBBS², Oche Agbaji, MBBS²,
and Prosper Okonkwo, MBBS³

Abstract

Objectives: We examined the association between adherence to drug-refill visits and virologic outcomes in a cohort of HIV-infected adults on combination antiretroviral therapy (cART) in North Central Nigeria. **Methods:** Retrospectively, 588 HIV-infected, cART-naïve adults (aged ≥ 15 years), initiated on first-line ART between 2009 and 2010 at the Jos University Teaching Hospital, were evaluated. Association between adherence to drug-refill visits, virologic (viral load > 1000 copies/mL), and immunologic failure was assessed using multivariable logistic regression. **Results:** After a median of 12 months on cART, 16% ($n = 94$) and 10% ($n = 59$) of patients had virologic and immunologic failures, respectively. In the final multivariable model, suboptimal adherence to drug-refill visits was a significant predictor of both virologic (adjusted odds ratio [AOR] 1.6; 95% confidence interval [CI]: 1.2–2.3) and immunologic (AOR 1.92; 95% CI: 1.06–3.49) failures. **Conclusion:** Adherence to drug refill is a useful predictor of successful virologic control and could be utilized for routine monitoring of adherence to cART in our clinical setting.

Keywords

pharmacy, drug refill, adherence, HIV, virologic outcome

Introduction

Sub-Saharan Africa (SSA) has witnessed a sustained reduction in AIDS-related mortality as a result of increased access to life-saving antiretroviral therapy (ART). The number of people dying of AIDS-related causes was cut by 32% between 2005 and 2011.¹ Antiretroviral therapy also significantly reduced the risk of HIV transmission² and the spread of tuberculosis.³ Nigeria ranks second in the global burden of HIV (next to South Africa), having an estimated 3.5 million people living with HIV and AIDS.⁴ Expansion of HIV treatment services in Nigeria started in 2004 with the support of the US President's Emergency Plan for AIDS Relief (PEPFAR) program. This resulted in more than 3-fold increases in the number of people accessing antiretroviral (ARV) medications from 108 572 to 395 569, between 2006 and 2011.⁵

Despite historic gains in the expansion of treatment services, adherence to combination ART (cART) remains a significant challenge to sustaining the benefits of ART. Suboptimal adherence results in virological failure,⁶⁻⁹ development of HIV drug resistance,¹⁰⁻¹² and death.¹³ One study showed that, for every 10% decrease in adherence, there is a 16% increase in

HIV-related mortality.⁷ In another study, there was 28% reduction in the risk of progression to AIDS with each 10% difference in mean adherence.⁸ Early identification of patients at risk of poor treatment outcomes through accurate and continuous assessment of adherence is important for effective and efficient treatment planning. This will also inform the provision of targeted adherence support.

Pharmacy refill data could serve as an adherence measure by providing the dates on which ARV medications were dispensed. It is a less intrusive method of measuring adherence than most other measures. A number of studies on the treatment of HIV and other diseases have used pharmacy refill records to

¹ Jos University Teaching Hospital, AIDS Prevention Initiative in Nigeria (APIN), Jos, Nigeria

² University of Jos/Jos University Teaching Hospital, APIN Centre, Jos, Nigeria

³ AIDS Prevention Initiative in Nigeria Lte, Abuja, Nigeria

Corresponding Author:

Abah O. Isaac, Jos University Teaching Hospital, AIDS Prevention Initiative in Nigeria, Jos, Nigeria.

Email: isaacabah@gmail.com

assess adherence.^{14,15} In a study, patients with regular pharmacy refills for >4 months were more likely than less adherent patients to achieve virologic suppression and immunologic improvement.¹⁶ In another study, a cumulative adherence of <95% to drug-refill visits was associated with virologic and immunologic failure and was comparable to CD4 counts for detecting current virologic failure in the cohort of patients on cART.¹⁷

Although Nigeria contributes significantly to the global HIV burden,⁴ very little is known about the virologic outcome of pharmacy refill adherence in public care facilities in Nigeria due to poor availability of viral load (VL) testing. Lack of emphasis on VL testing in ART programs in SSA is related to financial and technical constraints and the public health model adopted for the management of HIV in Africa.^{18,19} The current study is aimed at evaluating the impact of adherence to drug-refill schedules on immunological and virological outcomes in a cohort of adult Nigerian patients on cART.

Methods

Setting and Study Population

Jos University Teaching hospital (JUTH) is located in North Central Nigeria. JUTH HIV clinic is an outpatient clinic and is one of the largest providers of treatment, care, and support to people living with HIV in Nigeria. At the time of study, over 13 000 adults were enrolled in care and approximately 9300 patients were on treatment. Since 2004, the JUTH HIV clinic has received additional funding and support from the US PEPFAR program through the Harvard School of Public Health.

Eligibility Criteria

HIV-1-infected (confirmed positive by Western blot) treatment-naïve adults (15 years and older) started on first-line ART between January 2009 and December 2010 and followed up through December 2011 were included in a retrospective cohort analysis. Antiretroviral therapy eligibility criteria were based on the Nigerian National guidelines for HIV/AIDS treatment and care in adolescents and adults,²⁰ which at the time of the study recommended ART for those with a CD4 count <200 cells/mm³ regardless of the symptom or with CD4 count <350 cells/mm³ with HIV-related symptoms.

Standard of Care

Antiretroviral therapy-eligible patients were initiated on non-nucleoside reverse transcriptase inhibitor (NNRTI)-based cART defined as an NNRTI plus 2 nucleoside reverse transcriptase inhibitors (NRTIs), a criterion chosen based on the Nigerian National Adult ART Guidelines and its significance to resource-limited settings (RLSs).^{21,22} At ART initiation, patient's received information on ART and the importance of adherence. Patients were dispensed ART monthly and at scheduled doctor visits. They were also given projected monthly pharmacy refill dates and the date for the next appointment

with the doctor. At each refill visit, a pharmacist dispensed ARV pills and entered the dispense data into an electronic pharmacy record (FileMaker Pro, v10, Santa Clara, California), which had been developed as part of the Harvard PEPFAR/APIN Plus program. All the patients had HIV-1 VL (Amplicor HIV-1 Monitor v1.5, Roche Diagnostics, GmbH, Mannheim, Germany, lower detection limit 400 copies/mL) and CD4 count (CyFlow, Partec, Munster, Germany) pre-ART initiation, at 12 weeks, and subsequently every 24 weeks per clinical care protocols.

Data Collection and Ethical Consideration

Data retrieved for analysis from the Harvard PEPFAR/APIN Plus program database included baseline sociodemographic data (age, gender, occupation, and marital status), clinical characteristics pre-ART initiation, drug pickup history (date, number of pills dispensed, and regimen), CD4 count, and VL results pre-ART, at 24, and 48 weeks. The clinical protocols and use of data for studies have been approved by JUTH ethics committee, and all enrolled patients provided informed consent for the use of their data for research.

Outcome Definition

Virologic failure was defined as plasma VL above 1000 copies/mL based on 2 consecutive VL measurements after 6 to 12 months of cART initiation. Lack of responses within the first year was chosen as an outcome because of the clinical importance of initial response to cART on subsequent disease outcomes.²³ Immunological failure was defined as having a CD4 count of equal to or less than CD4 count pre-ART, after 6 months on ART, or a CD4 count of 100 cells/mm³ past 6 months on ART.²⁴ Drug refill adherence was calculated automatically by the computerized pharmacy appointment system using the total number of days that the patient was behind for the drug-refill visits, based on the following formula:

The number of days behind for drug-refill visit = (last dispense date – date of the prescheduled appointment indicated on pharmacy database).

The results were then added up for all refill visits to obtain the total number of days behind the scheduled visit per patient. Percentage of cumulative adherence was estimated by the following formula:

The total number of days behind schedule/total number of days the patient was assumed to be exposed to ART given the dispensed number of pills × 100.

Optimal and suboptimal adherence was defined as a cumulative adherence to drug-refill visits of ≥95% and <95%, respectively.

Statistical Analysis

Continuous variables were described by means and standard deviation (SD) or median and interquartile range (IQR) as appropriate based on the distribution, while categorical variables were described by frequencies and proportions. Bivariate

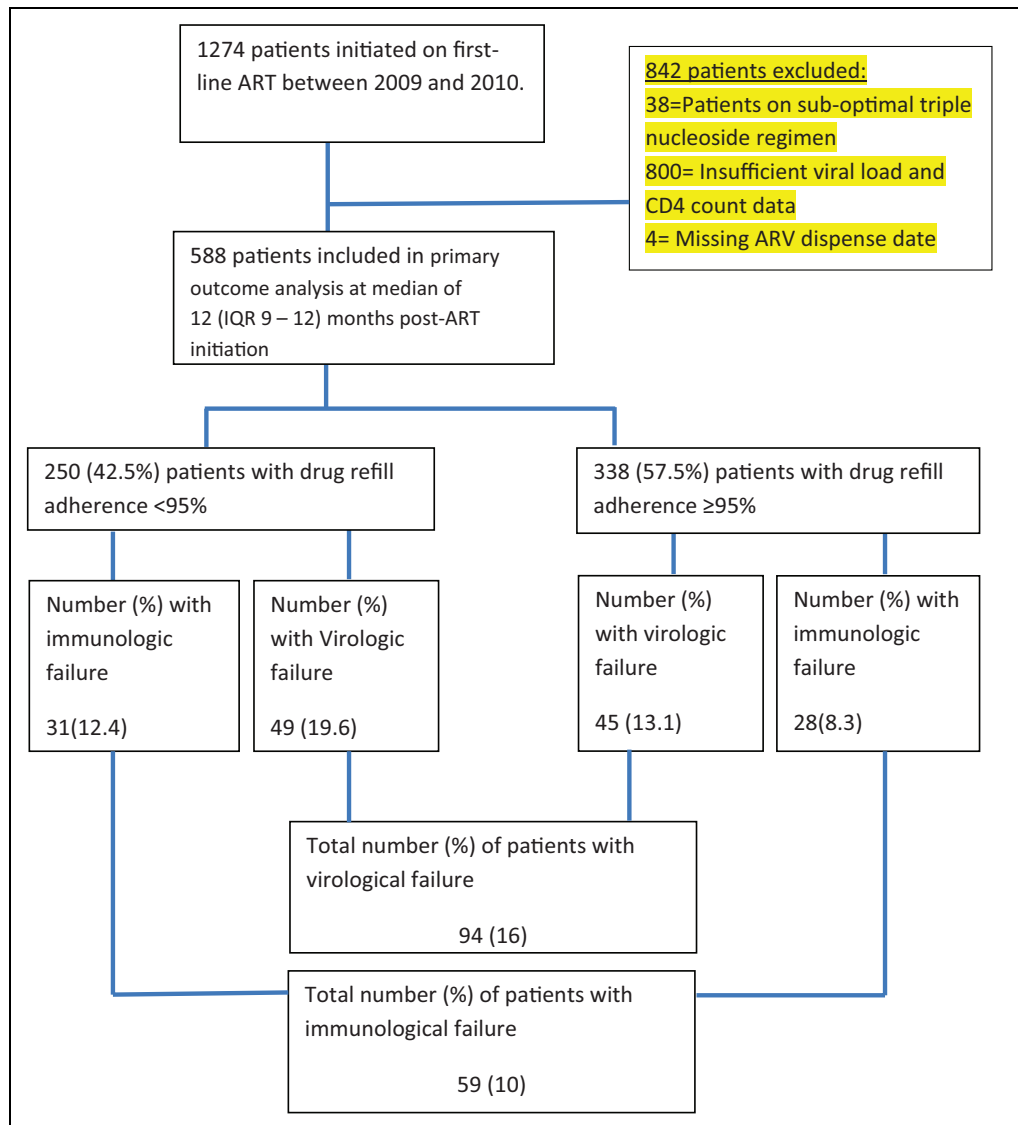


Figure 1. Patient’s disposition and primary outcome.

analyses to evaluate factors associated with virologic and immunologic failure were performed using Pearson chi-square test. Thereafter, variables with a *P* value ≤ .1 were included in a multivariate logistic regression model. In the final multivariable model, sex, age and ARV regimen were maintained to account for any residual confounders. Odds ratios (ORs), 95% confidence intervals (CIs), and *P* values were determined, with *P* values <.05 considered significant. All *P* values were 2 tailed. Data were analyzed with SPSS for windows version 20 (SPSS Inc, Chicago, Illinois).

Results

Patient’s disposition and primary outcomes are shown in Figure 1. A total of 1274 adults were initiated on NNRTI-based cART. Of the 1274 participants, 588 (46%) had sufficient CD4 count and VL data both at baseline and at

follow-up to be included in the primary outcome analysis. The median age of the patients included in the analysis was 34 years (interquartile range [IQR] 29–41 years). There were more females (65%) than males and most (53.7%) of the participants were married (Table 1). Median duration on ART was 12 months (IQR 6–12) at study end point.

Baseline median (IQR) CD4 count and VL were similar among patients with insufficient follow-up data and those with sufficient follow-up data; (163 [88–264] vs 167 [91–167] cells/mm³ [*P* = .5] and 4.5 [3.7–5.2] vs 4.6 [4–5.2] log₁₀ copies/mL [*P* = .6], respectively).

Adherence Characteristics

The mean cumulative percentage adherence to drug-refill visits was 94% (95% CI: 94-95). Overall, 250 (42.5%) patients had suboptimal adherence (<95%). In a separate analysis,

Table 1. Sociodemographic and Clinical Characteristics of 588 Patients on ART in Jos, Nigeria, and Association with Adherence to Pharmacy Drug Refill.

Characteristics	Group	Total, n (%)	Number (%) with adherence >95%	P Value
Sex	Female	392 (66.7)	219 (55.9)	.26
	male	196 (33.3)	119 (60.7)	
Age	<35	332 (56.5)	184 (55.4)	.25
	>35	256 (43.5)	154 (60.2)	
Employed	No	118 (20.1)	67 (56.8)	.86
	Yes	470 (79.9)	271 (57.7)	
Marital status	Single	143 (24.3)	76 (53.1)	.45
	Separated	59 (10)	31 (52.5)	
	Widowed	82 (13.9)	48 (58.5)	
	Married	304 (51.7)	183 (31.1)	
WHO stage ^a	1	216 (37.2)	127 (58.8)	.54
	2	102 (17.6)	60 (58.8)	
	3	233 (40.2)	133 (57.1)	
	4	29 (5)	13 (44.8)	
Education	No formal education	13 (2.2)	7 (53.8)	.98
	Primary	208 (35.4)	121 (58.2)	
	secondary	184 (31.3)	105 (57.1)	
	Tertiary	183 (31.1)	105 (57.4)	
Drug regimen	ZDV/3TC/EFV	30 (5.1)	17 (56.7)	.57
	ZDV/3TC/NVP	205 (34)	118 (57.6)	
	TDF/3TC/NVP	186 (31.6)	109 (58.6)	
	TDF/3TC/EFV	167 (28.4)	94 (56.3)	
CD4 count, cell/mm ³	<100	172 (29.3)	105 (61)	.26
	≥100	416 (70.7)	233 (56)	
Viral load, copies/mL	<100 000	388 (66)	225 (58)	.73
	≥100 000	200 (34)	113 (56.5)	

Abbreviations: ART, antiretroviral therapy; 3TC, lamivudine; EFV, efavirenz; NVP, nevirapin; TDF, tenofovir; WHO, World Health Organization; ZDV, zidovudine.
^aData not available for 8 patients.

sociodemographic characteristics were not significantly associated with adherence to drug pickup (Table 1).

Virologic Failure

In all, 94 (16%) of the 588 patients had virologic failure. Median interval of repeat VL test was 6 months (IQR 5–7). Variables associated with virologic failure (Table 2) in the bivariate analysis included sex, age, drug pickup adherence, pre-ART CD4 count, and pre-ART VL. After adjusting for other confounders (Table 3), suboptimal adherence to drug-refill visits was the only significant predictor of virologic failure (adjusted OR [AOR] 1.61; 95% CI: 1.15–2.27).

Immunological Failure

A total of 59 (10%) of 588 met the criteria for immunological failure. In the bivariate analysis, factors associated with immunological failure included NRTI backbone ($P = .01$), pre-ART CD4 count ($P < .001$), pre-ART VL ($P = .05$), and WHO disease stage at ART initiation ($P = .02$). In the final multivariable logistic regression model, risk factors for immunologic failure were a cumulative adherence to drug refill <95% (AOR 1.92; 95% CI: 1.06–3.49) and pre-ART CD4 count ≤ 100 cells/mm³ (AOR 7.71; 95% CI: 4.02–14.80).

Discussion

This study provides evidence for the usefulness of pharmacy-refill adherence measure in predicting virologic outcomes among patients on cART in a public care facility in Nigeria. Using 2 VL measurements during the first year of treatment, drug-refill adherence was significantly associated with virologic failure in our study participants. Patients with optimal adherence ($\geq 95\%$) to drug-refill schedules had a better likelihood of achieving maximal viral suppression within the first year of treatment. Clinically, this is useful as systematic monitoring of pharmacy refill adherence, particularly in settings with limited capacity for VL testing, could be used as a surrogate test for virologic failure. The result of this study supports report of similar studies carried out in South Africa²⁵ and Cameroon.²⁶

The proportion (57.5%) of our study participants with complete adherence to drug-refill visits was lower than that reported in an earlier study conducted by Taiwo et al²⁷ in Jos. This reflects the dynamic nature of adherence to chronic therapies. Therefore, monitoring of adherence using validated methods should be part of standard clinical procedures. This will help to identify patients with suboptimal adherence and enhance the provision of targeted adherence interventions. “Unlike other investigators,”^{17,26,28,29} we observed rates of viral suppression that were higher than drug pickup adherence. Although pharmacy-refill adherence has been shown to

Table 2. Demographic and Clinical Characteristics and Bivariate Analysis for the Association with Immunologic and Virologic Failure among 588 Patients on ART in Jos, Nigeria.

Characteristics	Group	Immunologic Failure, n = 59 (10%)	P Value	Virologic Failure, n = 94 (16%)	P Value
Sex	Female	37 of 392 (9.4%)	.51	72 of 392 (18.4%)	.03 ^a
	Male	22 of 196 (11.2%)		22 of 196 (11.2%)	
Age	≤35	34 of 332 (10.2%)	.85	62 of 332 (18.7%)	.04 ^a
	>35	25 of 356 (9.8%)		32 of 256 (12.5%)	
WHO disease stage	1	11 of 216 (5.1%)	.02 ^a	25 of 216 (11.6%)	.15
	2	10 of 102 (9.8%)		20 of 102 (19.6%)	
	3	31 of 233 (13.3%)		42 of 233 (18%)	
	4	5 of 29 (17.2%)		6 of 29 (20.7%)	
NNRTI	EFV	25 of 188 (13.3%)	.71	28 of 188 (14.9%)	.62
	NVP	34 of 400 (8.5%)		66 of 400 (16.5%)	
NRTI	ZDV	14 of 234 (6%)	.01 ^a	31 of 234 (13.2%)	.09
	TDF	45 of 354 (12.7%)		63 of 354 (17.8%)	
Adherence	<95	31 of 250 (12.4%)	.09	49 of 250 (19.6%)	.04 ^a
	≥95	28 of 338 (8.3%)		45 of 338 (13.3%)	
CD4 count, cells/mm ³	≤100	44 of 172 (25.6%)	<.001 ^a	45 of 172 (26.2%)	<.001 ^a
	>100	15 of 416 (3.6%)		49 of 416 (11.8%)	
Viral Load, copies/mL	≤100 000	32 of 388 (8.2%)	.05	51 of 388 (13.1%)	.01 ^a
	>100 000	27 of 200 (13.5%)		43 of 200 (21.5%)	

Abbreviations: ART, antiretroviral therapy; 3TC, lamivudine; EFV, efavirenz; NRTI, nucleoside reverse transcriptase inhibitor; NNRTI, nonnucleoside reverse transcriptase inhibitor; NVP, nelfinavir; TDF, tenofovir; ZDV, zidovudine.

^aSignificant

Table 3. Adjusted Association Between Characteristics of Patient and Immunologic and Virologic Failure.

Characteristics	Group	Immunological Failure ^a		Virological Failure ^b	
		AOR (95% CI)	P Value	AOR (95% CI)	P Value
Sex	Female	1.17 (0.59-2.30)	.64	1.06 (0.63-1.78)	.82
	Male				
Age	≤35	1.09 (0.59-2.07)	.76	1.42 (0.99-2.03)	.05
	>35				
WHO disease stage	1	0.58 (0.17-2.01)	.39	0.81 (0.35-1.83)	.61
	2	0.96 (0.27-3.39)		0.81 (0.34-1.92)	
	3	0.95 (0.31-2.91)		1.06 (0.48-2.35)	
	4				
NNRTI	Efavirenze	1.24 (0.50-3.09)	.63	1.28 (0.73-2.23)	.38
	Nevirapine				
NRTI	Tenofovir	0.57 (0.28-1.21)	.14	0.70 (0.47-1.02)	.06
	Zidovudine				
Adherence	<95%	1.92 (1.06-3.49)	.03 ^c	1.61 (1.15-2.27)	<.001 ^c
	≥95%				
Pre-ART CD4 count, cells/mm ³	≤100	7.71 (4.02-14.80)	<.001 ^c	1.29 (0.88-1.91)	.19
	>100				
Pre-ART viral load, copies/mL	≤100 000	0.73 (0.4-1.32)	.29	0.74 (0.52-1.07)	.11
	>100 000				

Abbreviations: ART, antiretroviral therapy; AOR, adjusted odds ratio; CI, confidence interval; NRTI, nucleoside reverse transcriptase inhibitor; NNRTI, nonnucleoside reverse transcriptase inhibitor; VL, viral load; WHO, World Health Organization.

^aAs defined by WHO.

^bTwo repeated VL > 1000 copies/mL.

^cSignificant.

correlate with virologic response and mortality in developed and RLSs,^{17,28,29} it gives no description of daily adherence to treatment and is limited in describing patient's pill-taking behavior. Other investigators have noted discordance between adherence determined using pharmacy records and virologic

response.³⁰ Furthermore, other studies have indicated that moderate adherence levels (70–90%) may be enough to achieve satisfactory virologic control with ARV regimens including boosted protease inhibitors or NNRTIs.³¹ However, at the 95% adherence level, we can be quite confident that a

very small proportion of individuals on NNRTIs are likely to have virological failure.^{32,33} In addition, other measures of adherence, including subjective measures that were not evaluated in this study,^{32,33} ought to be examined as should correctness of this approach in patients on non-NNRTI-based cART.

Like other investigators,¹⁷ we found that, independent of adherence, patients initiating treatment at CD4 counts less than <100 cells/mm³ have a higher risk of immunologic failure within the first year of treatment. The benefits of initiating treatment at higher CD4 thresholds have been described in other studies.³⁴⁻³⁷ The most recent treatment guidelines favor treatment initiation at higher CD4 count thresholds.³⁸

As a result of inconsistent VL data, a large proportion (54%) of participants were excluded from the primary outcome analysis due to our strict inclusion criteria; however, comparison of patients included and excluded did not show any clinically significant differences in the baseline CD4 counts, VLs, and adherence profile.

Conclusion

Virologic suppression within the first year of treatment with an NNRTI-based regimen was significant in our study population. Adherence measured by pharmacy drug refill could serve as a useful predictor of early virologic failure. We, therefore, recommend that it should be used in routine monitoring of adult HIV-infected patients on cART in RLS.

Authors' Note

This article was presented at the 8th International Conference on HIV Treatment and Prevention Adherence, Miami, Florida, USA, on June 2013. Oral Abstract # 175. We thank Kimberly Scarci for her support in critically reviewing the manuscript. We also thank the patients and staff of the JUTH HIV clinic.

Declaration of Conflicting Interests

The author(s) declared no potential conflicts of interest with respect to the research, authorship, and/or publication of this article.

Funding

The author(s) disclosed receipt of the following financial support for the research, authorship, and/or publication of this article: This work was funded in part by the US Department of Health and Human Services, Health Resources and Services Administration (U51HA02522) and CDC through APIN (PS 001058). The contents are solely the responsibility of the authors and do not represent the official views of the funding institutions.

References

- UNAIDS. UNAIDS World AIDS Day Report 2012. http://www.unaids.org/en/media/unaids/contentassets/documents/epidemiology/2012/gr2012/jc2434_worldaidsday_results_en.pdf. Accessed February 18, 2014.
- Attia S, Egger M, Müller M, Zwahlen M, Low Nicola. Sexual transmission of HIV according to viral load and antiretroviral therapy: systematic review and meta-analysis. *AIDS*. 2009; 23(11):1397-1404.
- Motasim B, Douglas W, Robin W. Effect of highly active antiretroviral therapy on incidence of tuberculosis in South Africa: a cohort study. *Lancet*. 2002;359(9323):2059-2064.
- National Population Commission (NPC) Nigeria and ICF Macro. *Nigeria Demographic and Health Survey 2008*. Abuja, Nigeria: National Population Commission (NPC) [Nigeria] and ICFMacro; 2009.
- Federal Republic of Nigeria. Global Aids Response Country Progress Report (GARPR) Nigeria 2012. <http://www.unaids.org/en/dataanalysis/knowyourresponse/countryprogressreports/2012countries/Nigeria%202012%20GARPR%20Report%20Revised.pdf>. Accessed February 18, 2014.
- Garcia DP, Knobel H, Carmona A, Guelar A, Lopez-Colomes JL, Cayla JA. Impact of adherence and highly active antiretroviral therapy on survival in HIV-infected patients. *J Acquir Immune Defic Syndr*. 2002;30(1):105-110.
- Hogg RS, Heath K, Bangsberg D, et al. Intermittent use of triple-combination therapy is predictive of mortality at baseline and after 1 year of follow-up. *AIDS*. 2002;16(7):1051-1058.
- Bangsberg DR, Perry S, Charlebois ED, et al. Non-adherence to highly active antiretroviral therapy predicts progression to AIDS. *AIDS*. 2001;15(9):1181-1183.
- Golin CE, Liu H, Hays RD, et al. A prospective study of predictors of adherence to combination antiretroviral medication. *J Gen Intern Med*. 2002;17(10):756-765.
- Paterson DL, Swindells S, Mohr J, et al. Adherence to protease inhibitor therapy and outcomes in patients with HIV infection. *Ann Intern Med*. 2000;133(1):21-30.
- Low-Beer S, Yip B, O'shaughnessy MV, Hogg RS, Montaner JS. Adherence to triple therapy and viral load response. *J Acquir Immune Defic Syndr*. 2000;23(4):360-361.
- Wainberg MA, Friedland G. Public health implications of antiretroviral therapy and HIV drug resistance. *JAMA*. 1998;279(24):1977-1983.
- DiMatteo MR, Giordani PJ, Lepper HS, Croghan TW. Patient adherence and medical treatment outcomes: a meta-analysis. *Med Care*. 2002;40(9):794-811.
- Steiner JF, Prochazka AV. The assessment of refill compliance using pharmacy records: methods, validity, and applications. *J Clin Epidemiol*. 1997;50(1):105-116.
- Turner BJ, Newschaffer CJ, Zhang D, Cosler L, Hauck WW. Antiretroviral use and pharmacy-based measurement of adherence in postpartum HIV-infected women. *Med Care*. 2000; 38(9):911-925.
- Maher K, Klimas N, Fletcher MA, et al. Disease progression, adherence, and response to protease inhibitor therapy for HIV infection in an urban veterans affairs medical center. *J Acquir Immune Defic Syndr*. 1999;22(4):358-363.
- Bisson GP, Gross R, Bellamy S, et al. Pharmacy refill adherence compared with CD4 count changes for monitoring HIV-infected adults on antiretroviral therapy. *PLoS Med*. 2008;5(5):e109.
- Nathan F, Teri R, Alexandra C. Viral load monitoring in resource-limited settings: a medical and public health priority. *AIDS*. 2012; 26(13):1719-1720.

19. Calmy A, Ford N, Hirschel B, et al. HIV viral load monitoring in resource-limited regions: optional or necessary? *Clin Infect Dis*. 2007;44(1):128-134.
20. Federal Ministry of Health (2007). National guidelines for HIV and AIDS treatment and care in adolescents and adults. Abuja, Nigeria. http://www.who.int/hiv/amds/Nigeria_adult_2007.pdf Accessed February 18, 2014.
21. Stringer JS, Zulu I, Levy J, et al. Rapid scale up of antiretroviral therapy at primary care sites in Zambia: feasibility and early outcomes. *JAMA*. 2006;296(7):782-793.
22. Severe P, Leger P, Charles M, et al. Antiretroviral therapy in a thousand patients with AIDS in Haiti. *N Engl J Med*. 2005;353(22):2325-2334.
23. Chene G, Sterne JA, May M, et al. Prognostic importance of initial response in HIV-1 infected patients starting potent antiretroviral therapy: analysis of prospective studies. *Lancet*. 2003;362(9385):679-686.
24. WHO. WHO definitions of clinical, immunological and virological failure for the decision to switch ART regimens 2003. http://www.who.int/hiv/pub/guidelines/arv2013/art/WHO_CG_table_7.15.pdf . Accessed March 13, 2014.
25. El-Khatib Z, Katzenstein D, Marrone G, et al. Adherence to Drug-Refill Is a Useful Early Warning Indicator of Virologic and Immunologic Failure among HIV Patients on First-Line ART in South Africa. *PLoS One*. 2011;6(3):e17518.
26. Rougemont M, Stoll EB, Elia N, Ngang P. Antiretroviral treatment adherence and its determinants in Sub-Saharan Africa: a prospective study at Yaounde Central Hospital, Cameroon. *AIDS Res Ther*. 2009;6:21.
27. Taiwo OB, Idoko AJ, Welty JL, Otoh I, et al. Assessing the virologic and adherence benefits of patient-selected HIV treatment partners in a resource-limited setting. *J Acquir Immune Defic Syndr*. 2010;54(1):85-92.
28. Grossberg R, Zhang W, Gross R. A time-to-prescription-refill measure of antiretroviral adherence predicted changes in viral load in HIV. *J Clin Epidemiol*. 2004;57(10):1107-1110.
29. Nachega JB, Hislop M, Dowdy DW, et al. Adherence to highly active antiretroviral therapy assessed by pharmacy claims predicts survival in HIV-1 infected South African adults. *J Acquir Immune Defic Syndr*. 2006;43(1):78-84.
30. Nachega JB, Hislop M, Dowdy D, Chaisson RE, Regensberg L, Maartens G. Adherence to non-nucleoside reverse transcriptase-based HIV therapy and virologic outcomes. *Ann Intern Med*. 2007;146(8):564-573.
31. Martin M, Del Cacho E, Codina C, et al. Relationship between adherence level, type of the antiretroviral regimen, and plasma HIV type 1 RNA viral load: a prospective cohort study. *AIDS Res Hum Retrovirus*. 2008;24(10):1263-1268.
32. Nachega JB, Hislop M, Dowdy DW, Chaisson RE, Regensberg L, Maartens G. Adherence to non-nucleoside reverse transcriptase inhibitor-based HIV therapy and virologic outcomes. *Ann Intern Med*. 2007;146(8):564-574.
33. Nieuwkerk PT, Oort FJ. Self reported adherence to antiretroviral therapy for HIV-1 infection and virologic treatment response: a meta-analysis. *J Acquir Immune Defic Syndr*. 2005;38(4):445-448.
34. Simoni JM, Kurth AE, Pearson CR, Pantalone DW, Merrill JO, Frick PA. Self-report measures of antiretroviral therapy adherence: a review with recommendations for HIV research and clinical management. *AIDS Behav*. 2006;10(3):227-245.
35. Gallant JE, Hulbert E, Harley C. Health outcomes associated with the timing of antiretroviral therapy initiation. Paper presented at: 6th IAS conference on HIV pathogenesis and treatment, Rome, 2011: Abstract no. CDB320.
36. Antiretroviral Therapy (ART) Cohort Collaboration. Effect of baseline CD4 cell counts on the clinical significance of short-term immunologic response to antiretroviral therapy in individuals with virologic suppression. *J Acquir Immune Defic Syndr*. 2009;52(3):357-363.
37. CASCADE Collaboration. Timing of HAART initiation and clinical outcomes in human immunodeficiency virus type 1 seroconverters. *Arch Intern Med*. 2011;171(17):1560-1569.
38. WHO. Consolidated guidelines on the use of antiretroviral drugs for treating and preventing HIV infection: recommendations for a public health approach June 2013. http://apps.who.int/iris/bitstream/10665/85321/1/9789241505727_eng.pdf. Accessed April 21, 2014.